



## Scheda tecnica: **VENTRESCA DI TONNO ROSSO** in olio di oliva

### **DATI GENERALI - PRODUCT DATA**

RAGIONE SOCIALE E INDIRIZZO DELL'OPERATORE DEL SETTORE ALIMENTARE RESPONSABILE DELLE INFORMAZIONI SUGLI ALIMENTI E CON IL CUI NOME E' COMMERCIALIZZATO IL PRODOTTO <i>The business name and address of the food business operator responsible for the food information shall be the operator under whose name or business name the food is marketed</i>	<b>ARMATORE srl</b> <b>Via Campinola, 1</b> <b>84010 Cetara (SA)</b>
NUMERO DEL BOLLINO CE - <i>Registration Number</i>	<b>IT P7B3E CE</b>
DESCRIZIONE DEL PRODOTTO - <i>Product Description</i>	<b>Fish product received frozen. Before processing, the raw material is defrosted in the cold room. Subsequently the slices undergo cooking in water and, once dried, are put into jars by hand.</b>
MATURAZIONE - <i>Maturation</i>	
MODALITA' DI CONFEZIONAMENTO - <i>Packaging mode</i>	<b>The Bluefin Tuna Belly, once packed with olive oil in sterile glass jars including capsules, undergo a sterilization process. Subsequently, the jars are washed before being labeled. The material used for packaging complies with current regulations.</b>
CONFEZIONI - <i>Weight</i>	<b>Peso netto: 170g - 230g - 850g</b>
GIORNI DI VITA DEL PRODOTTO ANCORA NEL SUO IMBALLO ORIGINARIO - <i>Shelf life in original packaging</i>	<b>4 years</b>
MODALITA' DI CONSERVAZIONE - <i>Storage conditions</i>	<b>The product maintains its characteristics unaltered from the packaging date if stored at room temperature away from heat sources. After opening, keep refrigerated for up to 4 days.</b>

### **INGREDIENTI IN ORDINE DECRESCENTE- INGREDIENTS**

Ingredienti - <i>Ingredients</i>	QUID (Percentuale ingrediente caratterizzante) QUID ( <i>Percentage of characteristic ingredient</i> )	Origine geografica - <i>Country of Origin</i>
<b>Bluefin Tuna Belly</b>	<b>64</b>	<b>Mediterranean Sea</b>
<b>Olive oil</b>	<b>36</b>	<b>Italia</b>

### **ALLERGENI - ALLERGENS**

<b>Allergeni presenti nel prodotto finito - Allergens present in the finished product</b>		
01	Cereali contenenti glutine, cioè: grano, segale, orzo, avena, farro, kamut o i loro ceppi ibridati e prodotti derivati / <i>Cereals containing gluten, namely: wheat, rye, barley, oats, spelt, kamut or their hybridised strains, and products thereof</i>	
02	Crostacei e prodotti a base di crostacei / <i>Crustaceans and products thereof</i>	
03	Uova e prodotti a base di uova / <i>Eggs and products thereof</i>	
04	Pesce e prodotti a base di pesce / <i>Fish and products thereof</i>	X
05	Arachidi e prodotti a base di arachidi / <i>Peanuts and products thereof</i>	
06	Soia e prodotti a base di soia / <i>Soybeans and products thereof</i>	
07	Latte e prodotti a base di latte (incluso il lattosio) / <i>Milk and products thereof (including lactose)</i>	
08	Frutta a guscio, vale a dire: mandorle ( <i>Amygdalus communis L.</i> ), nocciole ( <i>Corylus avellana</i> ), noci ( <i>Juglans regia</i> ), noci di acagiù ( <i>Anacardium occidentale</i> ), noci di pecan [ <i>Carya illinoensis (Wangenh.) K. Koch</i> ], noci del Brasile ( <i>Bertholletia excelsa</i> ), pistacchi ( <i>Pistacia vera</i> ), noci macadamia o noci del Queensland ( <i>Macadamia ternifolia</i> ), e i loro prodotti <i>Nuts, namely: almonds (Amygdalus communis L.), hazelnuts (Corylus avellana), walnuts (Juglans regia), cashews (Anacardium occidentale), pecan nuts (Carya illinoensis (Wangenh.) K. Koch), Brazil nuts (Bertholletia excelsa), pistachio nuts (Pistacia vera), macadamia or Queensland nuts (Macadamia ternifolia), and products thereof</i>	
09	Sedano e prodotti a base di sedano / <i>Celery and products thereof</i>	
10	Senape e prodotti a base di senape / <i>Mustard and products thereof</i>	
11	Semi di sesamo e prodotti a base di semi di sesamo / <i>Sesame seeds and products thereof</i>	
12	Anidride solforosa e solfiti in concentrazioni superiori a 10 mg/kg o 10 mg/litro in termini di SO <sub>2</sub> totale da calcolarsi per i prodotti così come proposti pronti al consumo o ricostituiti conformemente alle istruzioni dei fabbricanti <i>Sulphur dioxide and sulphites at concentrations of more than 10 mg/kg or 10 mg/litre in terms of the total SO<sub>2</sub> which are to be calculated for products as proposed ready for consumption or as reconstituted according to the instructions of the manufacturers</i>	
13	Lupini e prodotti a base di lupini / <i>Lupin and products thereof</i>	
14	Molluschi e prodotti a base di molluschi / <i>Molluscs and products thereof</i>	



## Scheda tecnica: **VENTRESCA DI TONNO ROSSO** in olio di oliva

### **DICHIARAZIONE NUTRIZIONALE SE GIÀ PRESENTE IN ETICHETTA - NUTRITION DECLARATION**

Energia - Energy:	<b>252 kcal/100g</b> <b>1050 kJ/100g</b>
Grassi - Fat di cui saturi - of Which Saturated	<b>16,2 g/100g</b> <b>2,7 g/100g</b>
Carboidrati - Carbohydrate di cui zuccheri - of Which Sugars	<b>0 g/100g</b> <b>0 g/100g</b>
Proteine - Protein	<b>26,5 g/100g</b>
Sale - Salt	<b>1,2 g/100g</b>
Fibre - Fibre	<b>0 g/100g</b>


### **PARAMETRI CHIMICO-FISICI-CHEMICAL-PHYSICAL PARAMETERS**

Attività dell'acqua (aw) - Activity Water (aw)	<b>0,85</b>
pH	<b>5,85</b>

### **PARAMETRI MICROBIOLOGICI\*- MICROBIOLOGICAL ANALYSIS**

Clostridi solfito riduttori UFC/g	<b>&lt;10 UFC</b>
Escherichia Coli (UFC/g)- (CFU/g)	<b>&lt;10 UFC</b>
Listeria monocytogenes in 25 g	<b>assente in 25g</b>



	<b>HACCP PLAN</b> <b>Application of the system HACCP</b> <b>BLUEFIN TUNA / BLUEFIN TUNA BELLY IN OIL</b>	EDITION 1
		DATE 20.10.2020
		Riference: <b>Sez. 1.4</b>
		PAGE 3 of 5

## 1. FLOWCHARTS

For the elaboration of the process flow-charts relating to the activities described, governed by the EC Reg. 852/2004, a particular symbol was used to facilitate the visualization of the lights and processes.

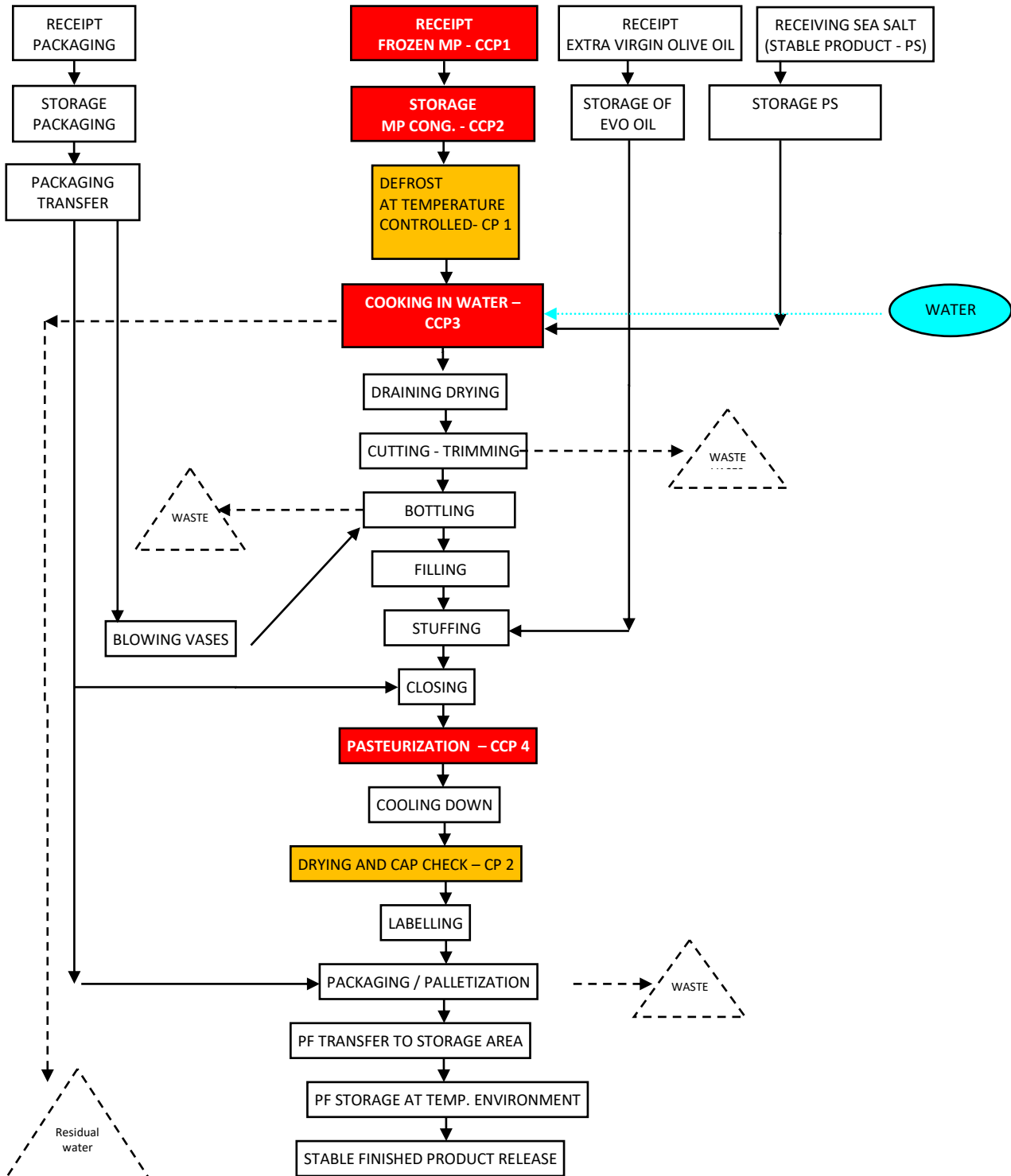
The flow diagram has the function of helping to define the dangers of the process, the possible crossings between different products and possible alternative processing solutions and therefore to identify the critical control points (CCP) of the HACCP plan.


Furthermore, the same diagram can be used when training staff to understand for each phase which are the preventive activities that must be adopted.

Below is the legend of symbols and colors:

	The phase is a CP, that is, it involves an operational control
	The phase is a CCP
	The phase does not include CCP / CP and is normally managed with GMP and GHP
→	Process flow (raw materials, intermediates and packaging) If it is not continuous but interrupted by the arrow, it indicates that the flow can take two different directions (optional). If it is continuous, it indicates that the process always occurs.
- - - - - →	Waste flow (MSW: Urban Solid Waste; Waste: Category 3 Material; Residual water: processing waste destined for treatment)
- - - - - →	Water flow

**Flow chart: BLUEFIN TUNA / BLUEFIN TUNA BELLY IN OLIVE OIL**



	<b>HACCP PLAN</b> <b>Application of the system HACCP</b> <b>BLUEFIN TUNA / BLUEFIN TUNA BELLY IN OIL</b>	EDITION 1
		DATE 20.10.2020
		Riference: <b>Sez. 1.4</b>
		PAGE 5 of 5

## 2. IN-FIELD CHECK OF FLOW CHART

The HACCP team, in order to confirm the flow chart, carried out some production inspections on different days and times, found that the flow charts shown in the previous point actually reflect reality and are actually applied: therefore the flow chart has been confirmed.